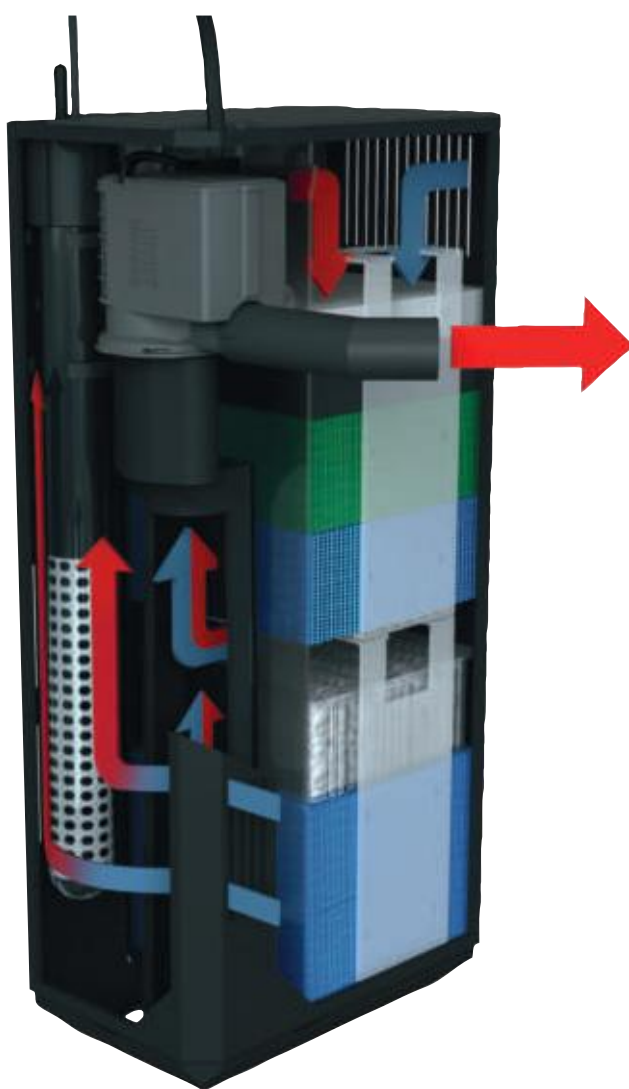




Instruction Manual

Filter System Bioflow M/3.0, L/6.0, XL/8.0



www.juwel-aquarium.com


Introduction


Thank you for choosing a JUWEL Aquarium product.


Our products represent over 40 years experience in the manufacturing of aquariums and their accessories applying the most modern production techniques in bringing together the JUWEL Aquarium system, which is both easy to use and simple to maintain.

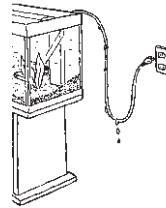
Safety instructions:

This appliance can be used by children aged from 8 years and above and persons with reduced physical, sensory or mental capabilities or lack of experience and knowledge if they have been given supervision or instruction concerning use of the appliance in a safe way and understand the hazards involved. Children shall not play with the appliance. Cleaning and user maintenance shall not be made by children without supervision.

 Always unplug all immersed electrical equipment from mains before placing your hands into the water.

 Operation with the RC circuit breaker only, max. 30mA.

 The power plugs of the electrical devices must not become moist. Connect the power plugs to the power supply at such a height that the connection cable forms a loop which would enable the water to drip down.

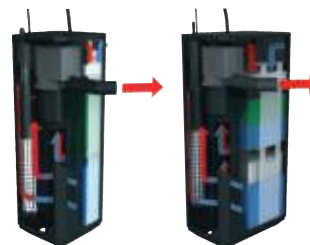


The JUWEL filter system Bioflow

The JUWEL filter system Bioflow is a highly effective biological filter system with two stages that includes components complementing each other in an ideal manner. Installing the filter in the aquarium makes hose connections unnecessary and prevents leaks. The pump output is not negatively affected by hose couplings, intake tubes etc. The capacity of the pump is designed in such a manner that an ideal level of biological filtering is ensured by a sufficient level of percolation through the filter material.

In that context, the large filter volume ensures excellent mechanical filtering and facilitates long cleaning intervals.

The construction of the filter system enables you to quickly access the individual heater, pump, and filter media components. This way, the filter system may comfortably be operated during cleaning and while performing maintenance work.



Bioflow Super

Bioflow 3.0
Bioflow 6.0
Bioflow 8.0

bioPad - Filter Wool (white pad)

The white filter wool acts as a mechanical pre-filter, removing large particles of dirt and excess food which in turn ensures that the other sponges do not get clogged.

bioCarb - Active Carbon Sponge (black)

The black activated carbon sponge sits on top of the blue coarse filter sponges, and removes chemical impurities from the water which cannot be removed biologically.

Nitrox - Nitrate Removal Sponge (green)

The Sponge contains micro-organisms, which will, once developed, reside inside the sponges and in the water. These micro-organisms feed of nitrates and will reduce them significantly. The JUWEL Filtration system provides the optimum housing for these micro-organisms.

bioPlus coarse - Filter Sponge Coarse (blue)

The coarse blue filter sponges allow bacteria cultures to develop quickly, cleaning the water which is now free from chemical impurities.

bioPlus fine - Filter Sponge Fine (blue)

The fine blue sponges and the bacteria cultures living in them, clean the water of even the smallest impurities.



Bioflow 3.0
Bioflow 6.0
Bioflow 8.0

Installation of the JUWEL Filter System in your Aquarium

The JUWEL Filter has been designed for installation in the right hand corner of the aquarium.

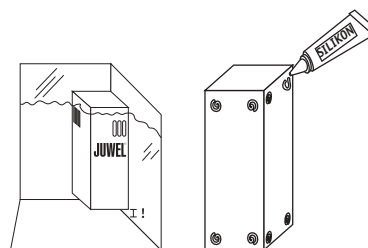
First of all, please remove all internal components of the Filter System leaving you with the empty filter housing.

In order to ensure that the Filter System is securely fastened to the glass panels, we have included a tube of special JUWEL Aquarium silicon. Apply the silicone onto the housing as shown in the picture, on both the side and the rear walls.

Your Aquarium should be empty or as near as empty, allowing you to wipe the glass dry.

Position the filter housing in the aquarium in such a way that the top of the filter housing rises 1 cm above the maximum water level of your aquarium.

Press the housing onto the glass panels firmly, and hold it for a few minutes. Allow the silicone to dry out for at least 24 hours.



Getting Started - The JUWEL filter system Bioflow M/3.0, L/6.0 and XL/8.0

You should prepare the filter for operation prior to setting up the aquarium. However, do not connect the electrical components to the power supply yet.

Please observe the following notes regarding commissioning the JUWEL filter system Bioflow:

The JUWEL filter system consists of:

- 1 heater (included in complete aquariums only)
- 1 heater holder
- 1 pump
- 1 outlet nozzle
- 2 filter basket
- 3 sets of white filter wool - bioPad, packaged
- 1 carbon sponge - bioCarb, packaged
- 1 green nitrate remover sponge - Nitrax, packaged
- 1 blue filter sponge - bioPlus coarse
- 2 blue filter sponges - bioPlus fine

1. Insert the base of the pump into the pump holder of the filter and firmly push it into position. In that context, the pump outlet faces in the direction of the outlet opening.

Confirm the proper arrangement of the gasket in the outlet opening (it is used to minimize the transmission of vibrations).

2. Carefully attach the outlet nozzle from the outside through the opening to the pump outlet and ensure its firm connection.

3. Insert the heater holder into the guide rail of the filter separation wall.

4. Insert the heater from above into the heater holder.

5. Now start preparing the filter sponges by removing the plastic packaging from the carbon sponge and the nitrate remover sponge. Thoroughly rinse the blue filter sponges only under running water.

6. After this, insert the blue "fine" filter sponges into the lower filter basket. Following that, place the blue "rough" filter sponge, the green nitrate remover sponge, the carbon sponge, and filter wool in the top position into the upper filter basket and push both filter baskets into the filter housing.

7. Place the filter cover on the filter housing.

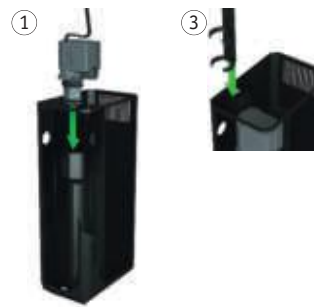
8. The JUWEL filter system Bioflow is now ready for operation.

The JUWEL Aquarium Filter System is a biological filter system. For it to work effectively, bacteria cultures will need to grow inside the blue sponges. This process can take up 6-8 weeks for the filter to fully mature. Consequently we recommend to decorate and plant the aquarium and add just a few (3-5) hardy fish in order to help the maturation process. Please test the water on a weekly basis to monitor the water conditions and once the water is safe you can begin to add more fish.

Recommendation

OxyPlus - O2 Air Diffuser

The special OxyPlus - O2 Air Diffuser provides additional oxygen to the aquarium if desired. This can be ordered from your JUWEL Aquarium retailer (Part No. 85145).



Bioflow 3.0
Bioflow 6.0
Bioflow 8.0



Care and maintenance of the JUWEL Filter System

The JUWEL Filter System requires very little maintenance if you follow the following instructions.

bioPad - Replace the white filter wool pad once a week. If you have large fish, then this may require changing slightly more frequently. This will ensure that the filter sponges will not be clogged by larger dirt particles.

bioCarb - Replace the black activated carbon sponge every 4-6 weeks. Again, if you have large fish then this may be to be more frequent. This ensures that any chemical impurities from the water will be removed. Please note that the chemicals which are absorbed by the activated carbon contained in the sponge, will be released to the water again if the change intervals are too long.

bioPlus coarse/bioPlus fine - If the filter wool and the activated carbon sponge are replaced as suggested, then it is sufficient to carefully clean or replace the coarse blue sponges at 6-12 weeks and the fine blue sponges at 3-9 months only.

- Cleaning or replacing the blue sponges or the Cirax filter medium affects the impact of the bacterial culture. For that reason, it is recommended not to clean or replace the blue sponges and the Cirax filter medium at the same time, but rather successively in an alternating manner.

You do not need to worry about the liquid dirt accumulating at the bottom of the filter housing. Normally, this dirt contains important biological substances which enhance the water quality.

Please do not worry if some dirt gets into the water during the cleaning process causing cloudiness. After the filter system is back in operation, the water will soon clear again.

Nitrax - In order to allow a proper level of micro-organisms in the filtration system it is recommended to exchange the sponge every 8 weeks. The nitrate removal sponge contains bacteria, which will after a while reduce the nitrate level in the aquarium significantly.

Important:

Always use original JUWEL Aquarium filter media to ensure the optimum performance of your system.



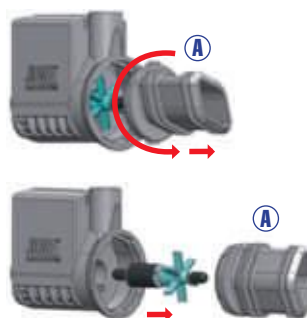
Maintenance of the pump JUWEL Eccoflow in the filter system Bioflow Super, M/3.0, L/6.0, XL/8.0

The pump JUWEL Eccoflow should be checked with regard to functionality and cleaned at regular intervals (at least once a month).

Please proceed as follows to that end:

1. Disconnect all electrical devices of the aquarium from the power grid.
2. Remove the outlet nozzles.
3. Remove the pump from the separation wall of the filter.
4. Disconnect the adapter (A) from the motor by turning it counter-clockwise and remove the impeller.
5. Thoroughly clean all components. It is particularly necessary to remove the impeller from the chamber and remove deposits and dirt from the chamber itself as well as the impeller. The function of the pump will be impaired otherwise. Also check the impeller for damage and possible signs of wear of the magnet.

After that, please reinstall the pump in reverse order in the filter.



Recommendation:

We recommend that you replace the parts subjected to wear and tear, e.g. the impeller, axle and the rubber axle holders, at intervals of approx. 12 months in order to ensure the optimum function and operating quietness of the pump. Inquire at your specialist retailer for assistance.

Safety instructions:

Never operate the power head out of water.

Always unplug the power head from the power supply before removing it from the filter.

The power head is intended for indoor use and for use in fluids up to 35°C.

Never repair the electrical cord or plug. In case of damage replace the complete power head.



Proper disposal (electrical waste)

The labelling on the product or on the accompanying literature declares that it must not be disposed of, at the end of its service life, together with household rubbish. Please dispose of this equipment separately from other waste, to protect the environment or public health from damage by unregulated waste disposal. Recycle the equipment and support the sustained recycling of material resources.

Private users should contact the dealer who sold them the product or the responsible authorities, for a demonstration on how to recycle the equipment in an environmentally friendly way.

Guarantee

We guarantee the performance of the JUWEL-Aquarium product or its accessories to the purchaser for a period of 24 months from the date of purchase according to the following conditions:

§ 1 Extent of the guarantee

(1) This guarantee extends to the JUWEL-Aquarium product and its components excluding items subject to wear and tear such as light tubes and filter media. It is limited to the product as such and does not cover damage to other property and/or individuals. In addition, the provisions of the product liability law apply. These provisions are not limited by the aforementioned arrangement.

(2) It is the prerogative of JUWEL-Aquarium to decide whether the guarantee is performed by means of repair or replacement. If neither repair nor replacement can ensure the performance of the JUWEL-Aquarium product the purchaser is entitled to demand a reduction in price or to return the product against repayment of the purchase price.

§ 2 Guarantee period and settlement procedure

(1) The guarantee period begins on the day of the purchase of the product from the retailer. Claims under this guarantee will not be honoured, if

(a) the damage is caused as a result of improper use or maintenance or non-observance of the instructions given in this manual

(b) the product or its components have been maintained by persons or companies not authorised by the manufacturer to do so

(c) the product or its components have been damaged by mechanical means of whatsoever kind, in particular broken glass

(2) All claims under this guarantee have to be notified to the retailer, from whom the aquarium has been purchased without delay, however, not longer than 2 weeks from the day of first occurrence of defects. Rights under the consumer protection laws will remain unaffected.

(3) Guarantee claims will only be accepted if the validity of the claim is supported by evidence of purchase of the JUWEL-Aquarium product.

This declaration of guarantee is a translation only. In case of doubts the original German language version prevails.

We reserve the right to make technical alterations.

© JUWEL AQUARIUM

© JUWEL, Trigon, Vision, Rekord, Rio, Lido, Vio, Primo, Korall, MonoLux, DuoLux, MultiLux, KorallLux, Violux, NovoLux, PrimoLux, SeaSkim, AquaHeat, EasyFeed, High-Lite, Warm-Lite, Colour-Lite, Day-Lite, Juwel Twin-Lite, HiFlex, Juwel EccoFlow, Bioflow, Cirax, Nitrox, Phorax, Carbox, BioPad, BioCarb, BioPlus, OxyPlus, Silexo, Conexo.

JUWEL AQUARIUM GMBH & CO. KG

Karl-Göx-Straße 1 27356 Rotenburg/Wümme . GERMANY

Telefon +49(0)42 61/93 79-32

Telefax +49(0)42 61/93 79-856

Service-Mail service@juwel-aquarium.de

JUWEL AQUARIUM UK Branch

Gateway 11 Business Park

Penfold Drive, Wymondham Norfolk NR18 0WZ

Tel.: 01953 606 363 Fax: 01953 603 839

E-Mail: info@juwel-aquarium.co.uk

Service-Mail: info@juwel-aquarium.co.uk