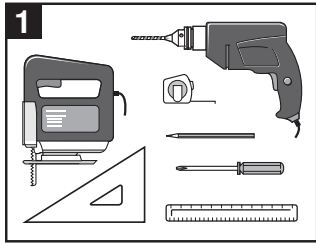




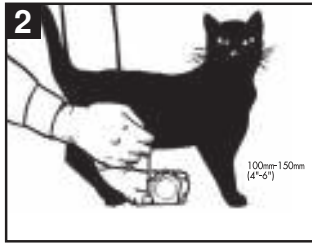
Magnetic 4-Way Locking Cat Flap

Installation Guide for **Metal Door** (Wood Door Installation on Reverse)

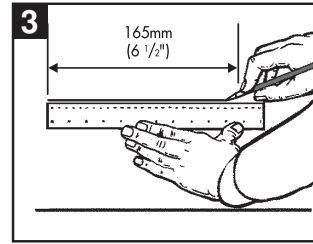
Before installing your cat flap, please read the following step-by-step instructions carefully



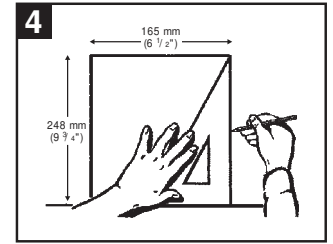
Tools Required



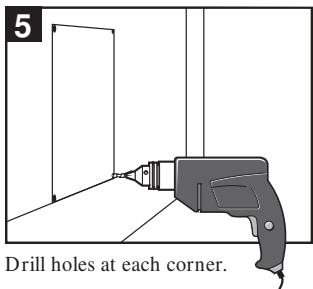
Measure the belly height of your cat. This is usually around 4 to 6 inches.



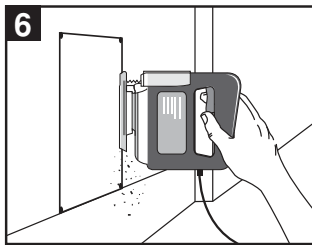
Mark this measurement on the outside of your door and draw a straight horizontal line 6 1/2".



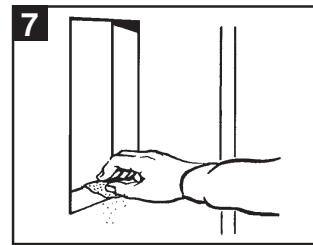
Wood Door Installation on reverse. The cat flap will not operate if fitted to a door containing metal e.g. uPVC coated metal doors, metal skin doors, or security doors. The cat flap must be isolated from the metal with a piece of wood. Draw a square 6 1/2" W x 9 3/4" H. Bottom of square should be the horizontal line from step 3.



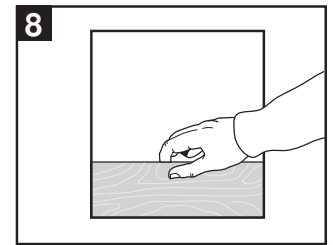
Drill holes at each corner.



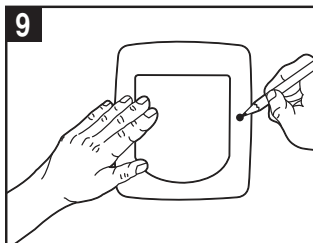
Cut along the lines using a jigsaw.



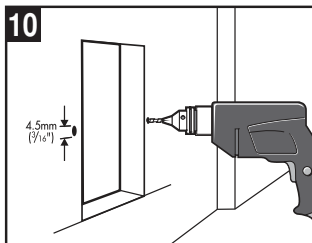
Smooth out the rough edges.



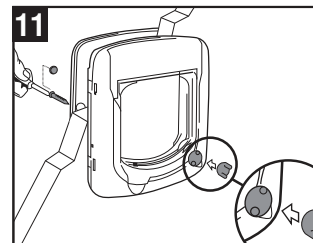
Fit a 3 1/2" x 6 1/2" wooden block to the hole.



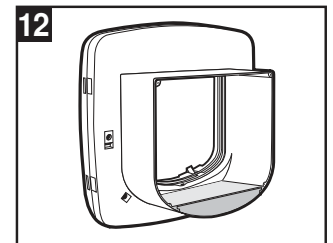
Place the cat flap in the hole, with the red 4-way lock facing inside. Mark the screw holes.



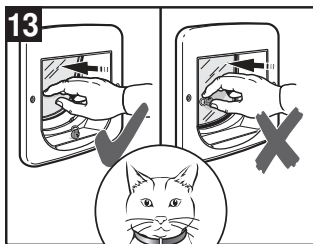
Remove the cat flap and drill holes with a 3/16" drill bit.



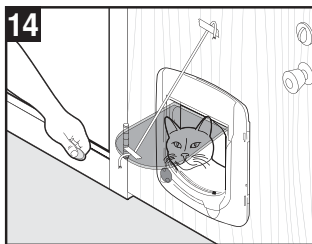
Screw into place. Cut off excess screw with wire cutters. Cover screw holes with blanking plugs for neat finish. Push fit 4-way locking handle into place.



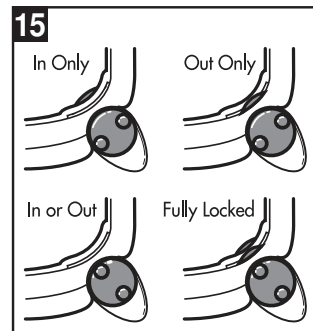
The fixed tunnel is an integral part of the mechanism and must not be cut or damaged. Doing so will impede the latching mechanism.



Place collar key on center of tunnel and push flap. Do not force flap open with magnet in hand. Fit hanging key to your cat's collar.



Temporarily tape open the cat flap. Sometimes it helps for you to be on one side of the door and your pet on the other. Use food or treats to coax your pet through the open door. Let the pet become familiar with passing through. In time, remove the tape and let the flap hang in the unlocked position.



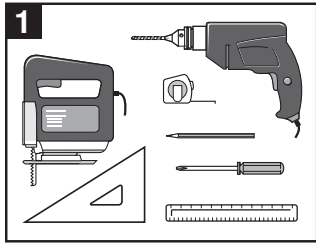
Using the 4-Way lock.



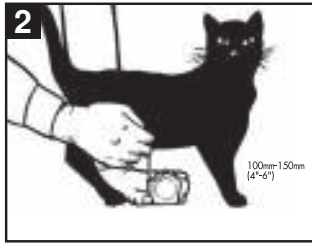
Magnetic 4-Way Locking Cat Flap

Installation Guide for **Wood Door** (Metal Door Installation on Reverse)

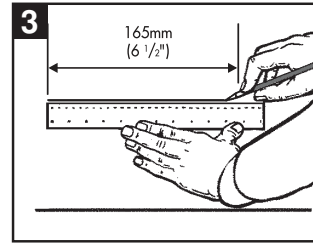
Before installing your cat flap, please read the following step-by-step instructions carefully



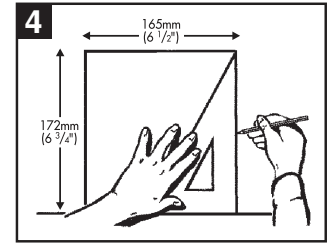
Tools Required



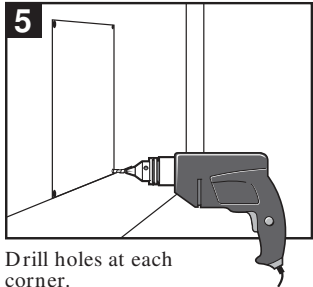
Measure the belly height of your cat. This is usually around 4 to 6 inches.



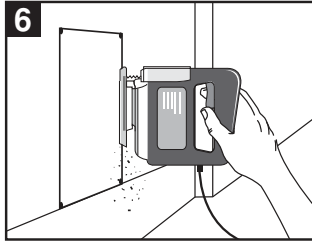
Mark this measurement on the outside of your door and draw a straight horizontal line $6 \frac{1}{2}$ ".



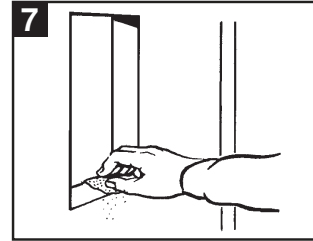
Using the horizontal line as the starting point, draw a square $6 \frac{1}{2}$ " x $6 \frac{3}{4}$ ".



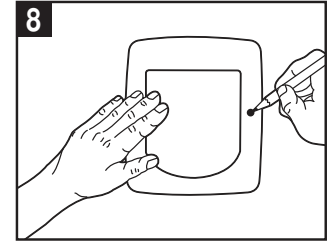
Drill holes at each corner.



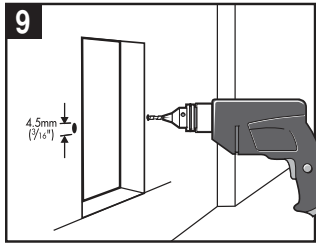
Cut along the lines using a jigsaw.



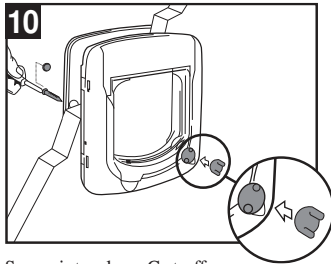
Smooth out the rough edges.



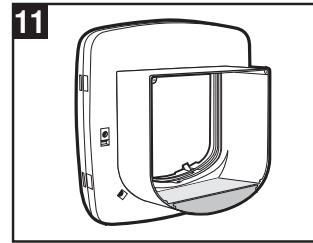
Place the cat flap in the hole, with the red 4-way locking facing inside. Mark the screw holes.



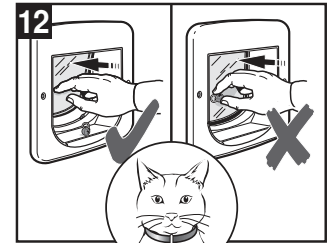
Remove the cat flap and drill holes with a $\frac{3}{16}$ " drill bit.



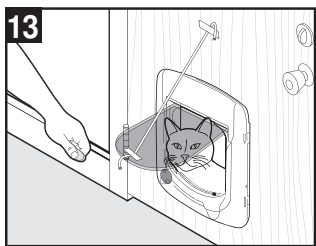
Screw into place. Cut off excess screw with wire cutters. Cover screw holes with blanking plugs for neat finish. Push fit 4-way locking handle into place.



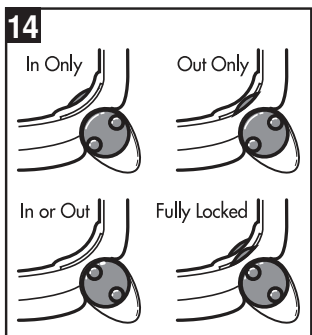
The fixed tunnel is an integral part of the mechanism and must not be cut or damaged. Doing so will impede the latching mechanism.



Place collar key on center of tunnel and push flap. Do not force flap open with magnet in hand. Fit hanging key to your cat's collar.



Temporarily tape open the cat flap. Sometimes it helps for you to be on one side of the door and your pet on the other. Use food or treats to coax your pet through the open door. Let the pet become familiar with passing through. In time, remove the tape and let the flap hang in the unlocked position.



Using the 4-Way lock.

Product Warranty

Please register your product online at www.petsafe.net. All parts are covered under warranty for the life of this product. Labor is covered for the first year of ownership. Thereafter, there is a minimum service charge for the repair or replacement of the product. Misuse, loss, damage by pet or improper use or handling is not covered. PetSafe® will not pay for loss of time, inconvenience, loss of use of your product or any incidental or consequential damage. Warranty void if product resold.

Please contact the Customer Care Center at 1-800-732-2677 (US), 1-800457-3911 (Canada) if you need service or for help in troubleshooting and, if needed, to arrange a repair for your product (a service charge may apply). Also, please visit our website www.petsafe.net for Frequently Asked Questions and Troubleshooting Tips.